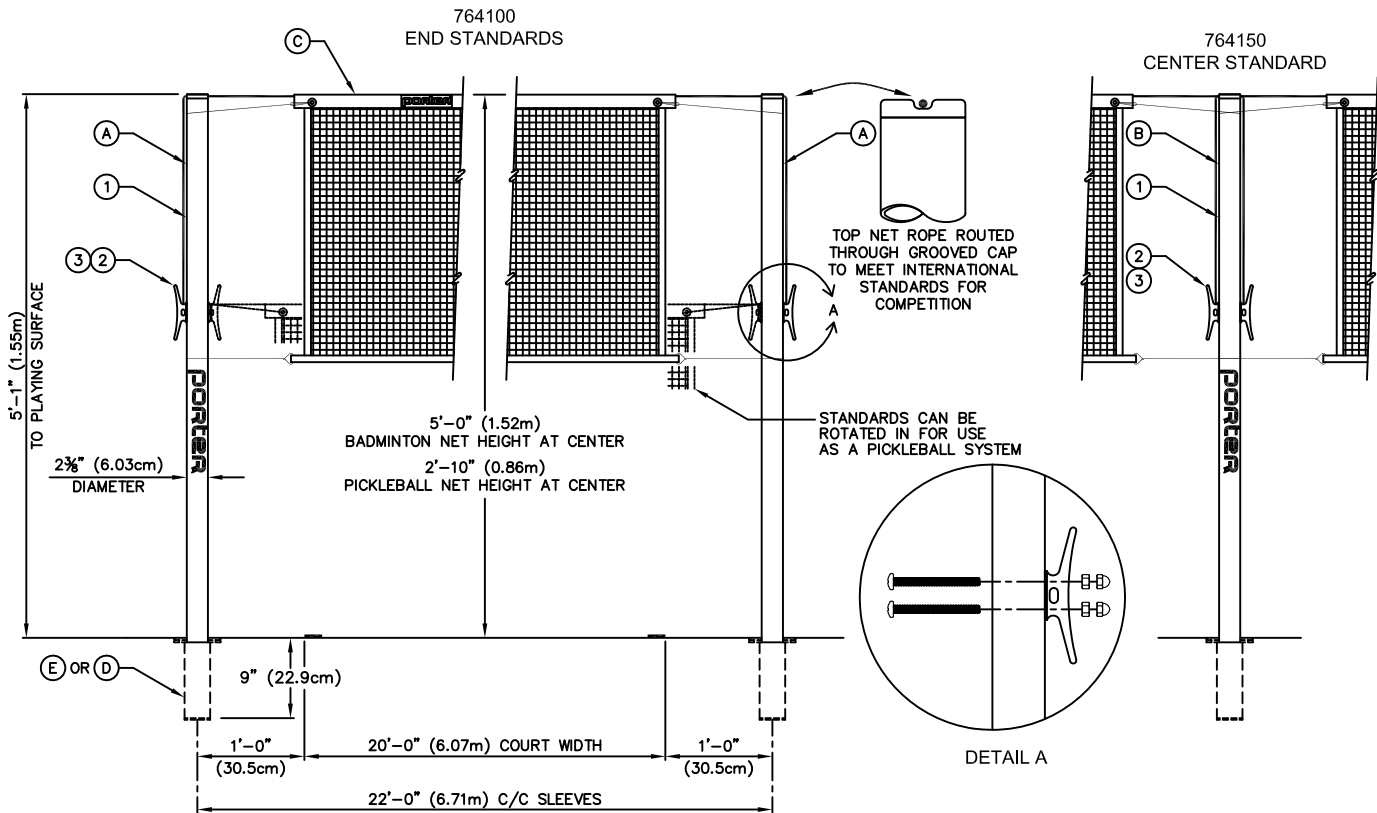


764100 - BADMINTON POSTS

764100 AND 764150 2³/₈" DIA. INDOOR/OUTDOOR SLEEVE-TYPE BADMINTON POSTS



PARTS LIST					
No.	00764 100 QTY.	00764 150 QTY.	DESCRIPTION		
1	2	1	UPRT 00274 108	UPRIGHT ASSEMBLY	
2	2	2	ROPE 00008 OGO	ROPE CLEAT	
3	4	0	HDWE 06222	1/4" x 4" Lg. MACHINE SCREW	
4	0	2	HDWE 06213	1/4" x 4 1/2" Lg. MACHINE SCREW	
5	4	2	HDWE 03004 OE0	HEX NUT- 1/4-20	
6	4	0	HDWE 03039 OE0	ACORN NUT- 1/4-20	

(A) — 764100 2³/₈" DIA. INDOOR / OUTDOOR SLEEVE-TYPE BADMINTON POST (PAIR)

(B) — 764150 2³/₈" DIA. INDOOR / OUTDOOR SLEEVE-TYPE CENTER STANDARD (EACH)

(C) — 2236110 BADMINTON NET (EACH)
See V-2236-11 20' x 30" (6.10m x 76.2cm)

(D) — 2³/₈" DIA. INDOOR FLOOR SLEEVE WITH COVER (EACH)

(E) — See R-402 00402-000 2³/₈" DIA. OUTDOOR GROUND SLEEVE (EACH)

Porter®

888-277-7778 PORTER@PORTERATHLETIC.COM
© COPYRIGHT 2017 PORTER ATHLETIC - ALL RIGHTS RESERVED

PROJECT NUMBER _____

PROJECT NAME _____

Porter

WWW.PORTERATHLETIC.COM/FACILITY

BADMINTON SPECIFICATION SHEET

V-764-1

5/2/2017

764100 - BADMINTON POSTS

764100 AND 764150 2 $\frac{3}{8}$ " DIA. INDOOR/OUTDOOR
SLEEVE-TYPE BADMINTON POSTS

SPECIFICATIONS

PORTER No. 764100 INTERNATIONAL COMPETITION SLEEVE TYPE BADMINTON STANDARDS (PAIR)

Standards designed to meet the International Badminton Federation specifications for competition badminton.

Uprights to be of heavy-wall 2-3/8" (6.03cm) O.D. steel tubing finished in a durable powder-coated finish for use both inside and outside for seasonal dual purpose use of the equipment. (Specify type of 2-3/8" diameter floor sleeve, or the No. 00827-000 adapter for use in 3-1/2" diameter sleeves).

Uprights fitted with special top caps with machined grooves for rope in top hem of net to meet competition requirements. Outside of uprights shall be equipped with cast type rope cleats for securing net rope and maintaining proper tension.

PORTER No. 764150 INTERNATIONAL COMPETITION SLEEVE TYPE BADMINTON CENTER STANDARD (EACH)

Center standard shall consist of one upright similar to above with attachment hardware on both sides of upright for double court use.

OPTIONAL ITEMS TO SPECIFY

- See Page No. G-770 for specifications on No. 00770-100 and 00770-200 Indoor Floor Sleeves (Each).
- See Page No. G-772 for specifications on No. 00772-100 and 00772-200 Indoor Floor Sleeves (Each).
- See Page No. R-402 for specifications on No. 00402-000 Outdoor Ground Sleeve (Each).

Porter
WWW.PORTERATHLETIC.COM/FACILITY

BADMINTON SPECIFICATION SHEET

V-764-1