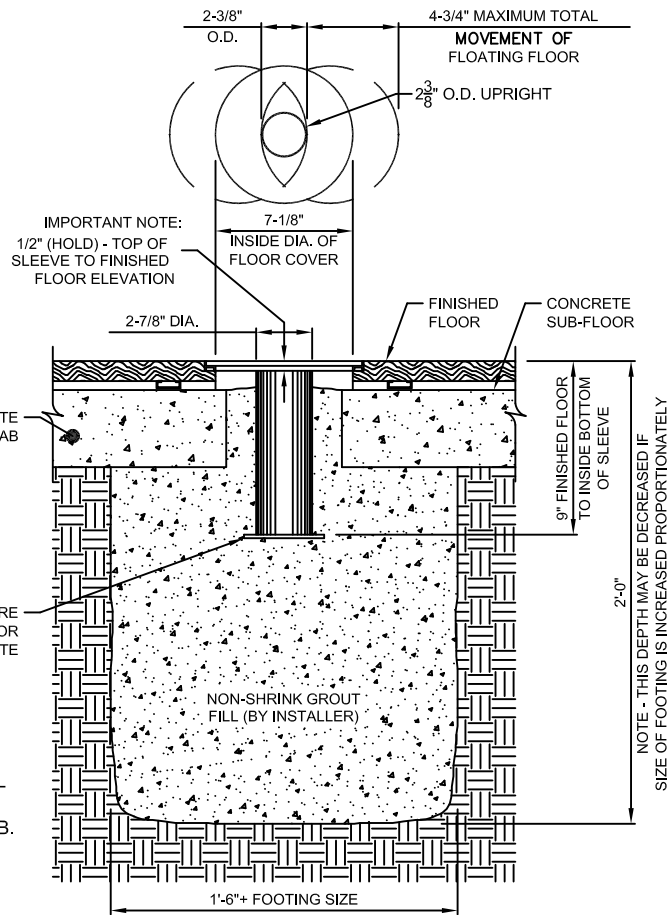
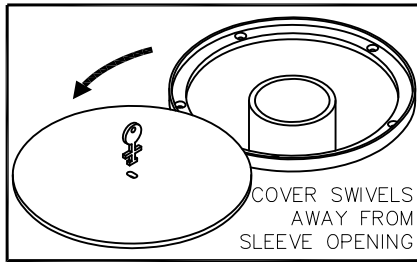
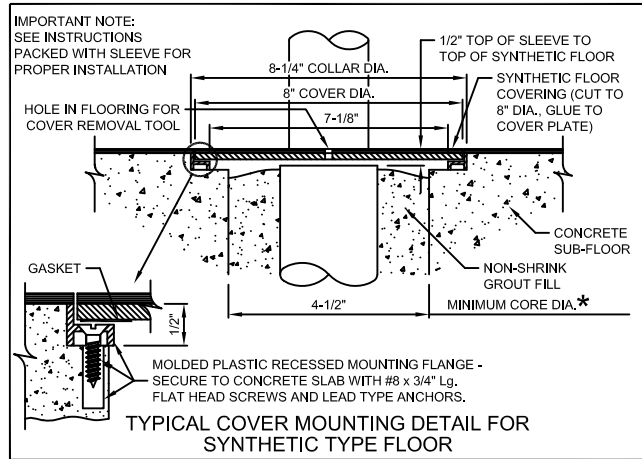
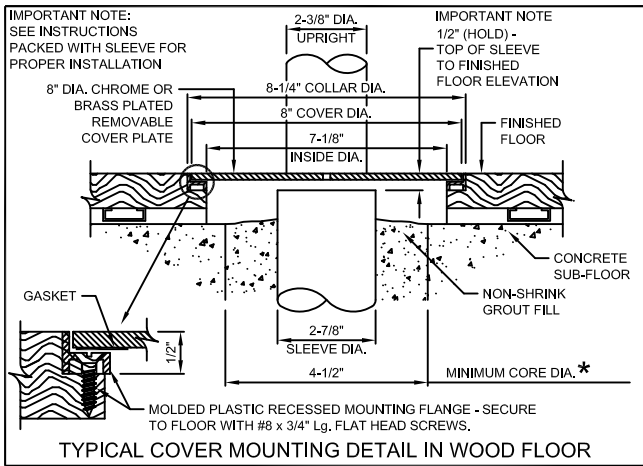


00772-X00 - INDOOR FLOOR SLEEVE

00772-100 AND 00772-200 FLOOR SLEEVES FOR 2-3/8" DIA. POST WITH 8" DIA. COVER



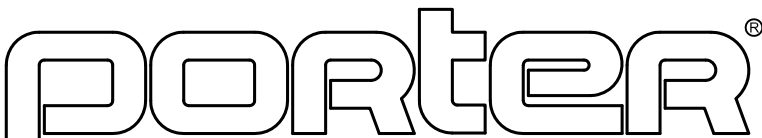
INSTALLATION OPTIONS

- * 1. LOCATE AND CORE 4-1/2" MINIMUM DIA. HOLES IN SLAB AND GROUT SLEEVES IN PLACE PER DETAIL ABOVE. CAUTION! - BEFORE CORING HOLES IN EXISTING CONCRETE SLAB, CHECK FOR LOCATIONS OF ELECTRICAL CONDUIT OR PIPE.
- 2. LOCATE SLEEVES AND POUR IN PLACE IN CONCRETE SLAB.

COMPLETE INSTALLATION INSTRUCTIONS ARE INCLUDED WITH FLOOR SLEEVE.

_____ INDICATE QUANTITY OF FLOOR SLEEVES REQ'D

- SELECT COVER:
- 00772-100 FLOOR SLEEVE WITH CHROME COVER PLATE
 - 00772-200 FLOOR SLEEVE WITH BRASS COVER PLATE



PROJECT NUMBER _____

PROJECT NAME _____

00772-X00 - INDOOR FLOOR SLEEVE

00772-100 AND 00772-200 FLOOR SLEEVES FOR 2-3/8" DIA. POST WITH 8" DIA. COVER

SPECIFICATIONS

PORTER No. 00772-100 GYMNAS IUM FLOOR SLEEVE (2-3/8 (6.0cm)) WITH CHROME COVER FOR USE IN ALL EXISTING OR FLOATING TYPE WOOD FLOORS

Sleeve shall be cast in concrete footing before slab is poured for new construction or remodeling in conjunction with floating type wood floors or in non-shrink type grout footing through existing finished floors. Top of sleeve to be installed 1/2 (1.3cm) below finished floor elevation.

Chrome plated cover plate shall be 8 (20.3cm) in diameter to allow maximum movement of 4-3/4 (12.1cm) in floating type floors. Cover plate shall consist of molded plastic recessed mounting flange (8-1/4 (20.9cm) dia.), cork gasket and an 8 (20.3cm) diameter chrome plated cover. Cover shall be equipped with a swivel type retainer pin to prevent theft. Special key shall be provided for cover removal.

Sleeve assembly shall be 2-7/8 (7.3cm) O.D. heavy wall steel tubing extending 9 (22.9cm) into concrete footing. Bottom of sleeve shall be capped with a 3 (7.6cm) square steel plate to provide proper anchorage in footing. Sleeve assembly to be finished in a rust resistant enamel finish.

PORTER No. 00772-200 GYMNASIUM FLOOR SLEEVE (2-3/8 (6.0cm)) WITH BRASS COVER FOR USE IN ALL EXISTING OR FLOATING TYPE WOOD FLOORS

Same specification as No. 00772-100 above, except that cover plate is brass plated.