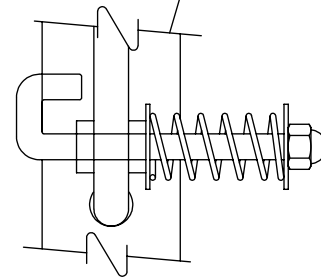
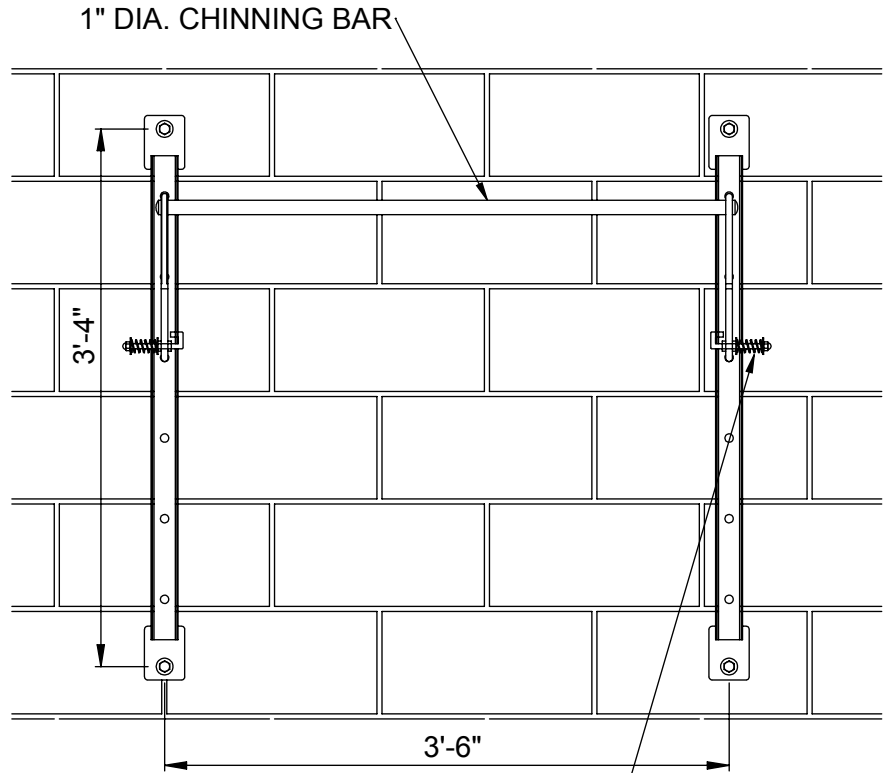
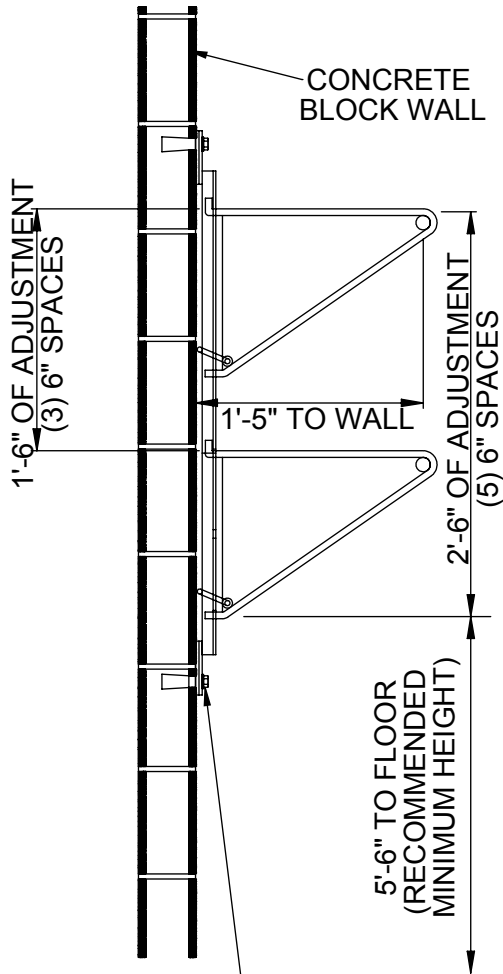
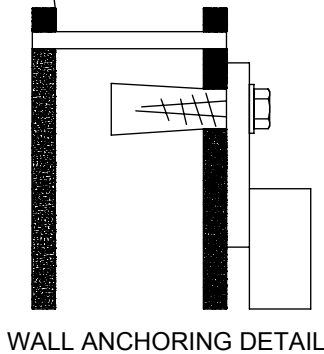


00197100 - ADJUSTABLE CHINNING BAR



LOCK DETAIL



| PARTS LIST | | |
|------------|------|---|
| NO. | QTY. | DESCRIPTION |
| 1 | 2 | CHNL00064001 ADJUSTABLE CHINNING BAR CHANNEL |
| 2 | 1 | FRME00200001 ADJUSTABLE CHINNING BAR WELD |
| 3 | 2 | UBOT000180E0 3/8" LOCK J-BOLT |
| 4 | 2 | SPNG000280E0 SPRING |
| 5 | 4 | HDWE050020E0 5/16" FLATWASHER |
| 6 | 2 | HDWE030050E0 3/8" LOCKING CAP NUT |
| 7 | 4 | HDWE08021000 VINYL SCREW ANCHOR (FOR 1/2" LAG) |
| 8 | 4 | HDWE061280E0 1/2"x2-1/2" LG. HEX HEAD LAG SCREW |
| 9 | 4 | HDWE050050E0 1/2" FLATWASHER |

- 00197100 ADJUSTABLE CHINNING BAR

00197100 - ADJUSTABLE CHINNING BAR

SPECIFICATIONS

Bar shall be designed to provide eighteen (18) inches of adjustment in six (6) inch increments. Unit shall consist of a bar weldment and two (2) heavy, formed channels with wall mounting plates on both ends.

The bar weldment shall consist of a 1" diameter solid bar 3'-6" in length, with formed braces to support the bar 1'-5" from the wall. The ends of the formed braces shall be designed to lock into holes on the wall mounted support channels to provide the adjustment capability. The lower ends of the formed brace supports shall be fitted with spring-loaded latch mechanisms to secure unit in place and provide quick and easy height adjustments. Bar may also be completely removed from the wall for storage when required. Hardware shall be provided to attach vertical channel assemblies to the wall.

Finish of entire unit to be pit and peel resistant durable, gloss black powder coat.

WARRANTY

- 197 chinning bar furnished with a 1-year limited warranty.

LEED® SUBMITTAL INFORMATION

| Credit | Measure |
|-------------------------|---|
| MRC4-Recycled Content | Post Consumer Average 25% Post Industrial 0% |
| MRC5-Regional Materials | Raw materials originate from multiple sources so origin point cannot be determined. Final Manufacturing/Assembly in Champaign, IL 61822 |