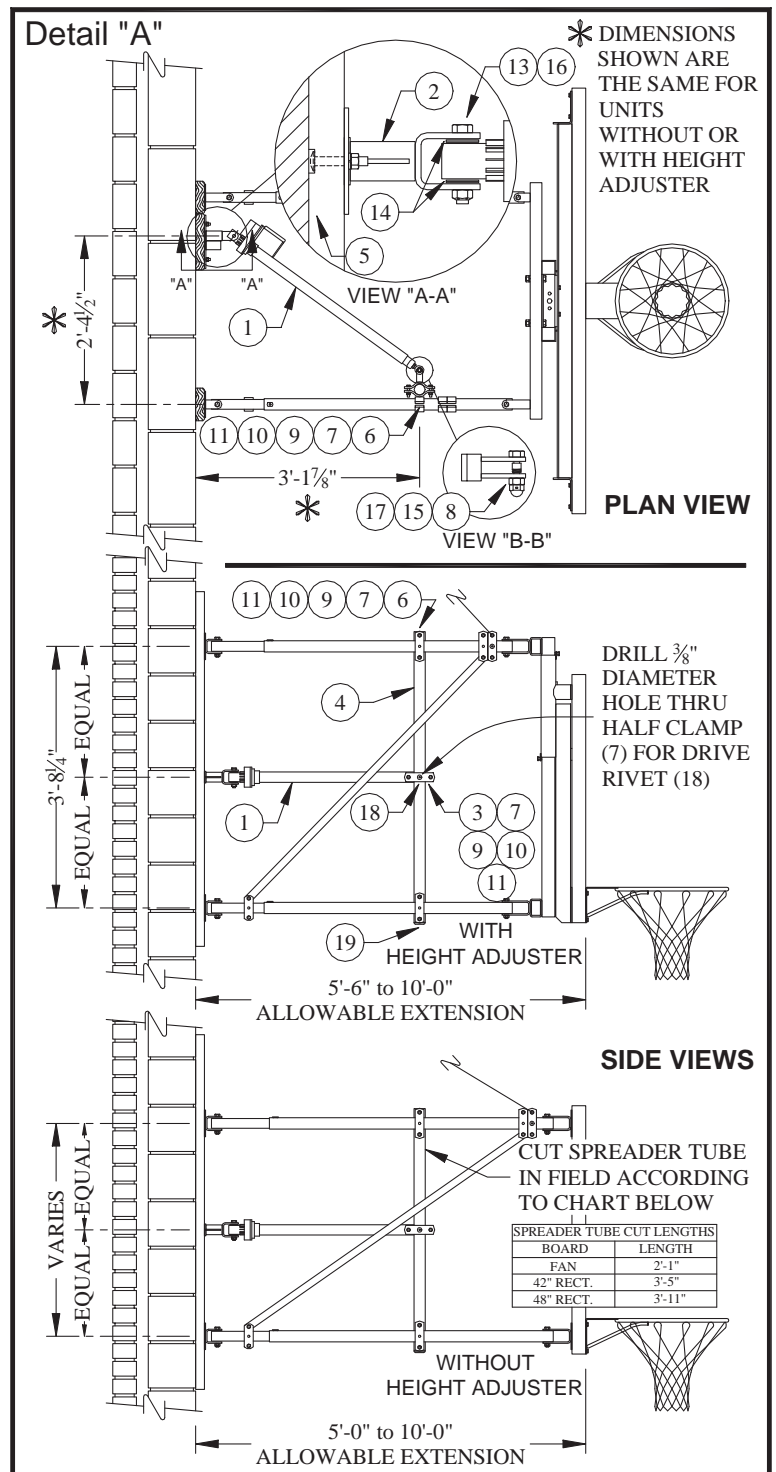


INSTALLATION, OPERATION & MAINTENANCE MANUAL

ELECTRIC SIDE-FOLD KIT FOR No. 220 BACKSTOPS

No. 10220-001, 10220-0010, 10220-002, 10220-003

1. Check all items against Parts List on Back of Page to ensure all have been included.
2. Counterbore Wood Pad (5) as shown in Detail "B".
3. Assemble Linear Actuator Mounting Bracket (2) to Wood Pad (5) as shown in See Detail "B".
4. Install Wood Pad with Actuator Mounting Bracket on wall according to dimensions provided in Detail "A".
5. Attach Linear Actuator (1) to Mounting Bracket (2) with 1/2" x 5" Lg. Hex Head Cap Screw (13) & 1/2" Convex Lock Nut (16). Insert four 1/2" Flat Washers (14) – two above and two below the actuator mounting post – to ensure proper spacing of the actuator (1). See Detail "A" – VIEW "A-A".
6. Loosely install Right Angle Clamp Weldment (6) and Half Clamp (7) to extension tubes on wall-mount backstop, as shown in Detail "A". Cut the Spreader Tube (4) as required. See chart in Detail "A". NOTE – IF the backstop has a height adjuster, no cutting is necessary. Next, slide Spreader Tube (4) through clamps and adjust to approximately 3' 1-7/8" from center of Spreader Tube (4) to wall. Tighten all clamp connections to secure Spreader Tube in place.
7. Loosely install Linear Actuator Ear Clamp (3) on Spreader Tube (4).
8. Connect Linear Actuator (1) to ears on Ear Clamp Weldment (3) with Nylon Shear Bolt (8). See Detail "A" – View "B-B", and Detail "C". **NOTE – NYLON SHEAR BOLT PROVIDED WITH THIS KIT MUST BE USED AT THIS CONNECTION. DO NOT SUBSTITUTE OTHER HARDWARE AT THIS CONNECTION.**

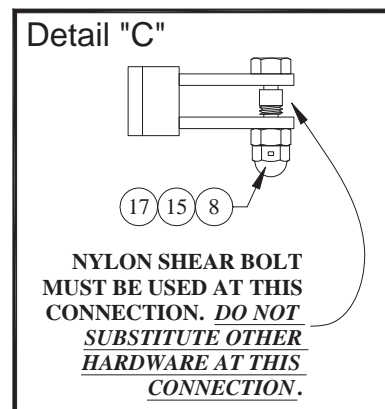
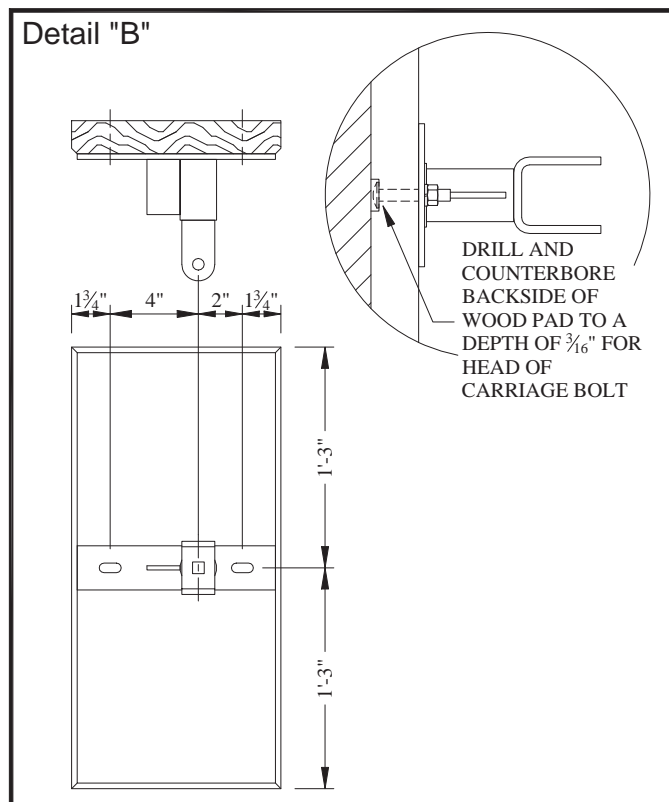


9. Plug the Linear Actuator (1) into a Porter test box, or into the twist-lock receptacle that was installed by the electrician. Operate the backstop through one complete cycle to ensure proper operation. The built-in limit switches will automatically stop the linear actuator at the extended and retracted positions. When in the playing position, backstop must be perpendicular to the wall. When in the storage position, backstop should be roughly parallel with the wall. Slide spreader tube (4) forward or backward as required to make adjustments to folding action.

10. After the folding action has been tested, make sure all hardware is fully tightened. Drill a 3/8" diameter hole through existing hole in half clamp (10) into spreader tube (4), on the opposite side of Ear Clamp Weldment (3) and secure with 3/8" Drive Rivet (17). See Detail "A".

11. Installation of Electric Side-Fold Kit is now complete.

PARTS LIST						
Item No.	Part No.	-001 Qty.	-0010 Qty.	-002 Qty.	-003 Qty.	Description
1	ELEC 00232 000	1	1	1	1	Linear Actuator Motor Kit
2	BRKT 00009 002	1	1	1	1	Linear Actuator Mounting Bracket
3	HING 00132 002	1	1	1	1	Linear Actuator Ear Clamp Weldment
4	TUBR 00726 002	1	1	1	1	Spreader Tube - 1-7/8" Dia. x 4'-1" Lg.
5	XPAD 21002 60B	1	1	1	1	Wood Pad - 2 x 10 x 2'-6" Lg.
6	CLMP 00073 002	2	2	2	2	Right Angle Clamp Weldment
7	CLMP 00005 002	5	5	5	5	Half Clamp
8	HDWE 58150 000	1	1	1	1	Nylon Shear Bolt - 1/2" x 2" Lg.
9	HDWE 01202 0P0	10	10	10	10	Hex Head Cap Screw - 3/8" x 1-1/2" Lg. Gr. 5
10	HDWE 02057 0P0	2	2	2	2	Carriage Bolt - 3/8" x 2-1/4" Gr. 5
11	HDWE 04002 0E0	12	12	12	12	Lockwasher - 3/8"
12	HDWE 03002 0E0	12	12	12	12	Hex Nut - 3/8"
13	HDWE 01102 0E0	1	1	1	1	Hex Head Cap Screw - 1/2" x 5" Lg. Gr.5
14	HDWE 05005 0E0	4	4	4	4	Flatwasher - 1/2"
15	HDWE 03003 0E0	2	2	2	2	Hex Nut - 1/2"
16	HDWE 03073 0E0	1	1	1	1	Convex Lock Nut - 1/2"
17	HDWE 03008 0E0	1	1	1	1	Locking Type Cap Nut - 1/2"
18	HDWE 58137 0E0	1	1	1	1	Drive Rivet - 3/8" x 11/16" Lg.
19	PCAP 00059 002	1	1	1	1	Internal Cap Plug - For 1-7/8" Dia.
20	ELEC 00042 100	4	4	4	4	4 Wire Twist-Lock Receptacle
21	ELEC 00047 0G0	1	1	1	1	1/2" Deep Receptacle Plate
22	ELEC 00086 000	1	1	0	0	Key Switch Assembly
23	12002200	0	0	1	0	Sportsonic II Receiver Kit



⚠ WARNING: This product can expose you to Titanium Dioxide, which is known to the State of California to cause cancer. For more information go to www.p65warnings.ca.gov.

porter

601 Mercury Drive, Champaign, IL U.S.A., 61822
www.porterathletic.com
 (888) 277-7778

SAVE THESE INSTRUCTIONS FOR FUTURE USE