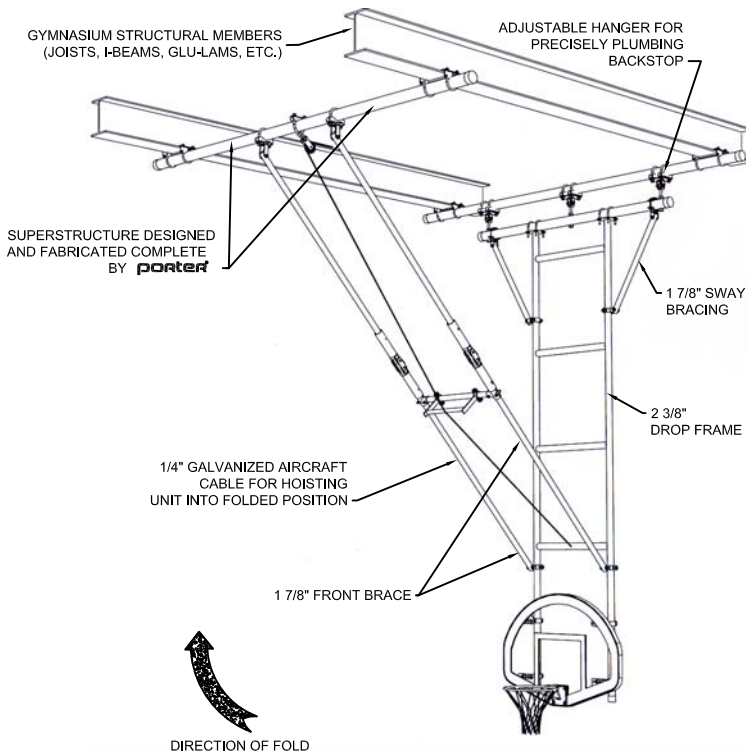


90549-W00 - FORWARD FOLD BACKSTOP

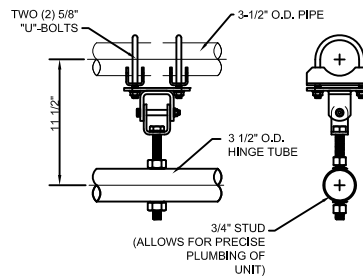
CEILING SUSPENDED, FORWARD FOLD
25' TO 28' ϕ OF MAST PIPE TO FINISHED FLOOR



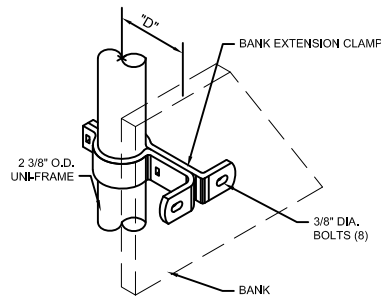
GENERAL NOTES
(SEE LEFT SIDE FOR COMPLETE PRODUCT SPECIFICATIONS)

1. SUPERSTRUCTURE SUPPLIED FOR EXISTING BUILDING CONDITIONS.
A. BACKSTOP SHALL BE SUPPORTED FROM 3" O.D. PIPE AND SECURED TO BEAMS WITH PRECISION DIE FORMED SUPPORT FITTINGS.
B. SPECIAL ATTACHMENT MEMBERS TO COMPLY WITH BUILDING DESIGN, LOCATED BY PORTER, DESIGNED BY ARCHITECT AND INSTALLED BY CONTRACTOR TO ELIMINATE EXPOSED PIPE BELOW CEILING.
2. "UNI-FRAME" ASSEMBLY WHICH CONSISTS OF 2" O.D. DROP PIPES AND 2" O.D. SPREADER PIPES IS WELDED INTO ONE RIGID UNIT 3/4" O.D. HINGE TUBE AND 1" O.D. SWAY BRACES ARE SHIPPED DETACHED OR MAST TO ALLOW FRAME TO FIT THROUGH GYMNASIUM DOOR OPENINGS.
3. MINIMUM DISTANCE FACE OF BANK TO WALL = 1'-6"
4. MANUAL OPERATION STANDARD ELECTRIC OPERATION AVAILABLE WITH EITHER KEY SWITCH, SPORTSONIC II OR KEYPAD CONTROL
5. FOR CABLE ATTACHMENT TO "UNI-FRAME" MAST ASSEMBLY THREAD CABLE THROUGH HOLE IN SPREADER LOCATED APPROX. 14'-0" ABOVE FINISHED FLOOR AND FASTEN TWO CABLE CLAMPS TO SECURE CABLE TO SPREADER.

ADJUSTABLE HANGER (3)

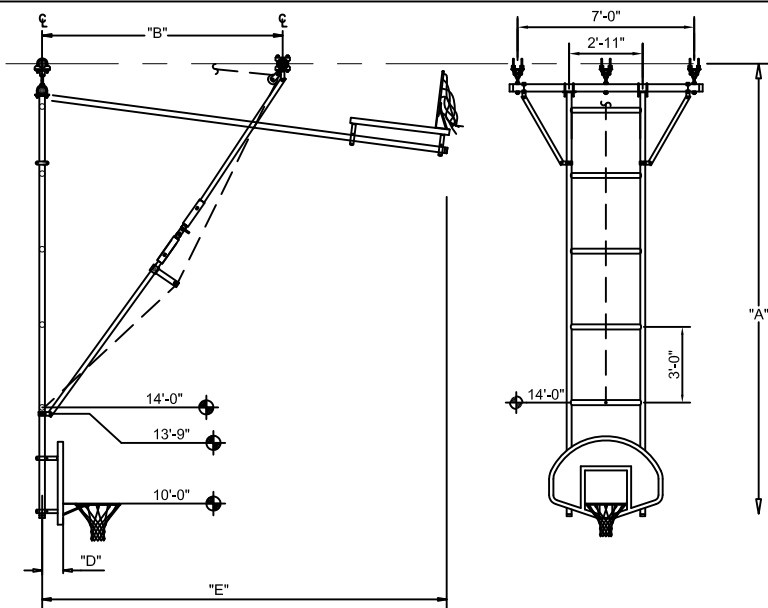


BANK EXTENSION CLAMP ATTACHMENT DETAIL



OPTIONAL FEATURES

1. GOAL HEIGHT ADJUSTMENT - WILL RAISE AND LOWER GOAL HEIGHT FROM 8'-0" TO 10'-0" ABOVE FINISHED FLOOR. SEE PAGE B-900-211 AND B-900-506 FOR DETAILS.
2. SAF-STRAP - RECOMMENDED ON UNITS LOCATED OVER BLEACHER AREAS. AUTOMATIC INERTIA TYPE MECHANISM WILL LOCK BACKSTOP IN POSITION SHOULD FAILURE OCCUR. SEE PAGE B-10797 FOR DETAILS AND SPECIFICATIONS. SPECIFY No. 10797-100.
3. ELECTRIC OPERATION - SEE REVERSE SIDE AND PAGE B-706 FOR DETAILS AND SPECIFICATIONS. SPECIFY No. 00706-000 ELECTRIC WINCH.



"A" ATTACHMENT HEIGHT	"B" FRONT BRACE DIMENSION (WITHIN 6\"/>		
25' 0-1/8" to 26'-0"	11'-0"	SEE "D" DIMENSION CHART	15'-8"
26' 0-1/8" to 27'-0"	12'-0"	"D" DIMENSION CHART	16'-8"
27' 0-1/8" to 28'-0"	13'-0"	"D" DIMENSION CHART	17'-8"

*SUBTRACT AN ADDITIONAL 2" WHEN UNIT HAS HEIGHT ADJUSTER OPTION



"D" DIMENSION CHART - FACE OF BACKBOARD TO CENTERLINE OF MAST HANGER PIVOT POINT

BACKBOARD MODEL No.	WITHOUT HEIGHT ADJUSTER	WITH HEIGHT ADJUSTER
205	8 1/4"	11 1/8"
234	7 3/16"	10 5/16"
234A	7 3/16"	10 5/16"
267	7 3/16"	N/A
267A	N/A	10 5/16"

RECTANGULAR BACKBOARDS AVAILABLE WITH OFFICIAL 2" THICK BOTTOM EDGE PADDING - SPECIFY IF REQUIRED

- 90549-W00 FORWARD FOLD CEILING SUSPENDED BACKSTOP



1-800-637-3090 PORTER@PORTERATHLETIC.COM
© COPYRIGHT 2017 PORTER ATHLETIC - ALL RIGHTS RESERVED

PROJECT NUMBER

PROJECT NAME

PORTER
 WWW.PORTERATHLETIC.COM/FACILITY

BASKETBALL SPECIFICATION SHEET

B-549-W

7/21/2017

90549-W00 - FORWARD FOLD BACKSTOP

CEILING SUSPENDED, FORWARD FOLD
25' TO 28' \varnothing OF MAST PIPE TO FINISHED FLOOR

SPECIFICATIONS

PORTER No. 549-W "UNI-FRAME" CEILING-SUSPENDED FORWARD-FOLD BACKSTOP (FOR ATTACHMENT HEIGHTS FROM 25' to 28')

Vertical front drop frame assembly "Uni-Frame" shall consist of 2-3/8" O.D. drop pipes spaced on 2-11" centers, horizontally braced with 2-3/8" O.D. spreader pipes welded on centers not to exceed 3'-0". Both ends of horizontal spreaders shall be saddle (die) cut to fit the outside diameter of the 2-3/8" O.D. drop pipes. Each connection of vertical and horizontal pipes shall be welded to form "Uni-Frame" type construction for maximum strength and resistance to vibration. (Drop frames with flattened or pinch cut type connections will not be approved as equal.) Vertical front drop weldment shall be supported by a 3-1/2" O.D. hinge tube to provide a wide stance hinge arrangement with additional 1-7/8" O.D. diagonal side sway bracing. "Uni-Frame" shall be suspended by special adjustable hangers (3) to provide for precise plumbing of frame during installation.

Backstop to operate with double 1-7/8" O.D. front brace assemblies with a folding knee joint. Knee joint to incorporate precision investment castings with a special internal torsion spring design to lock brace assembly firmly in playing position. Knee joint assembly shall be designed with an in-line pivot design to maximize backstop stability during aggressive play. Knee joint is easily disengaged by upward force of hoist cable on 1-7/8" O.D. spreader pipe connecting the two front brace assemblies near the knee joints.

Backstop shall be supported from 3-1/2" O.D. pipe anchored to roof framing members by means of heavy, formed steel support fittings. Each support fitting (supplied by the backstop manufacturer) to the roof framing, must be capable of supporting a load exceeding 10,000 pounds, with sufficient attachment points to acquire a 60:1 safety factor for support of the entire backstop superstructure system. Certified test results shall be furnished upon request. All cap screws shall be rated a minimum SAE Grade 5. Grade 2 cap screws will not be approved as equal. Superstructure pipes to be reinforced with special bridging or bracing when truss centers exceed spans of 14'-0".

Backstop shall be provided as standard with heavy-duty, fully enclosed worm gear type winch, designed to hold unit at any position when raising or lowering backstop. (Electrically operated units optional - See page No. B-706-1.) Hoist cable shall be 1/4" diameter galvanized aircraft cable with 7,000 lb. ultimate breaking strength. Swivel pulley shall be furnished with a 4" diameter cast (ductile iron) pulley sheave with a maintenance free, oil-impregnated bearing for proper hoist cable routing to winch. Pulley assembly and attachment to 3-1/2" O.D. support structure shall be rated at a minimum 9,000 pound load rating. Certified test results shall be furnished upon request.

All metal parts shall be painted one (1) coat of flat black enamel. (If special painting or colors are required, specify final painting by painting contractor.)

Backstop available with fan shaped boards only – specify type.

Note - Due to the forward brace configuration, the No. 549-W backstop is not recommended for competition court use.

OPTIONAL CENTER-STRUT® HEIGHT ADJUSTMENT UNIT

For Manual Operation, See Page No.: B-500-211
For Key Switch Operation, See Page No.: B-501-211
For Powr-Stick Operation, See Page No.: B-502-211
For Sportsonic® II Operation, See Page No.: B-503-211

OPTIONAL ITEMS TO SPECIFY

Electric Operation – See Page No. B-706-1.

ISSUED JULY 21, 2017, SUBJECT TO CURRENT MANUFACTURING PROCEDURES AND CHANGES
COPYRIGHT 2015 - PORTER ATHLETIC - ALL RIGHTS RESERVED
PORTER@PORTERATHLETIC.COM

PORTER
WWW.PORTERATHLETIC.COM/FACILITY

BASKETBALL SPECIFICATION SHEET

B-549-W

7/21/2017