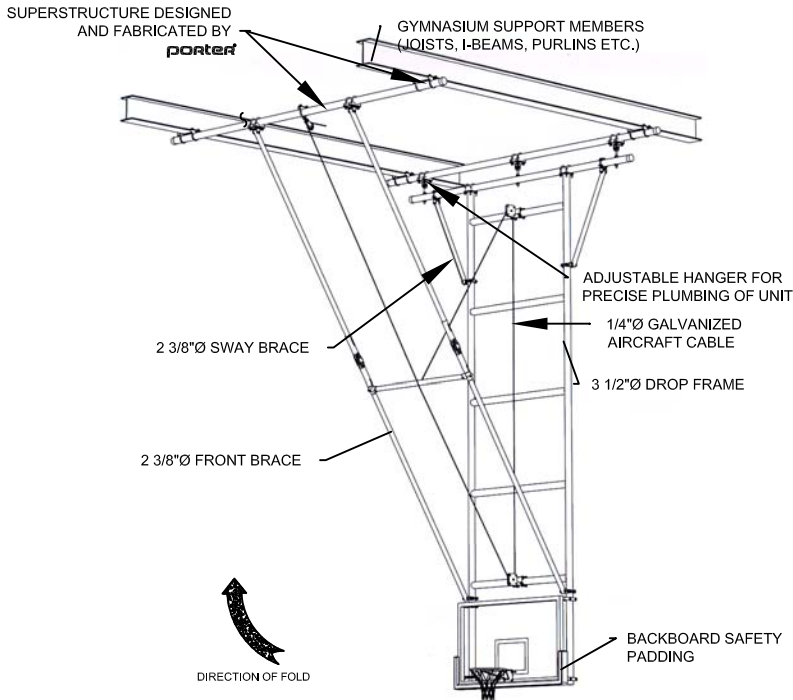


91449-W00 - FORWARD FOLD BACKSTOP

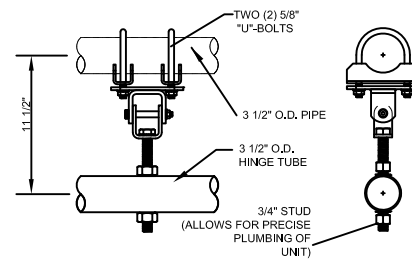
CEILING SUSPENDED, FORWARD FOLD 28' TO 40' ATTACHMENT HEIGHT



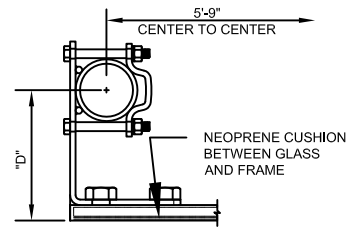
GENERAL NOTES (SEE LEFT SIDE FOR COMPLETE PRODUCT SPECIFICATION)

- SUPERSTRUCTURE SUPPLIED FOR EXISTING BUILDING CONDITIONS.
A. BACKSTOP SHALL BE SUPPORTED FROM 3 1/2" O.D. PIPE AND SECURE TO BEAMS WITH PRECISION DIE FORMED CLAMPS AND FITTINGS.
B. SPECIAL ATTACHMENT MEMBERS TO COMPLY WITH BUILDING DESIGN, LOCATED BY PORTER, DESIGNED BY ARCHITECT AND INSTALLED BY CONTRACTOR TO ELIMINATE EXPOSED PIPE BELOW CEILING.
- "CLEAR-VU" ASSEMBLY WHICH CONSISTS OF 3 1/2" O.D. DROP PIPES AND 3 1/2" SPREADER PIPES ARE WELDED INTO ONE RIGID UNIT. 3 1/2" O.D. HINGE TUBE AND 2 3/8" O.D. SWAY BRACES ARE SHIPPED DETACHED OF MAST TO ALLOW FRAME TO FIT THRU GYMNASIUM DOOR OPENINGS
- 3 1/2" O.D. DROP FRAME PIPES SPACED TO HIDE BEHIND PERIMETER MARKINGS ON BANK.
- MINIMUM DISTANCE FOR FACE OF BANK TO WALL = 1'-8"
- ELECTRIC OPERATION STANDARD. MANUAL OPERATION IS NOT AVAILABLE.

ADJUSTABLE HANGER (3)

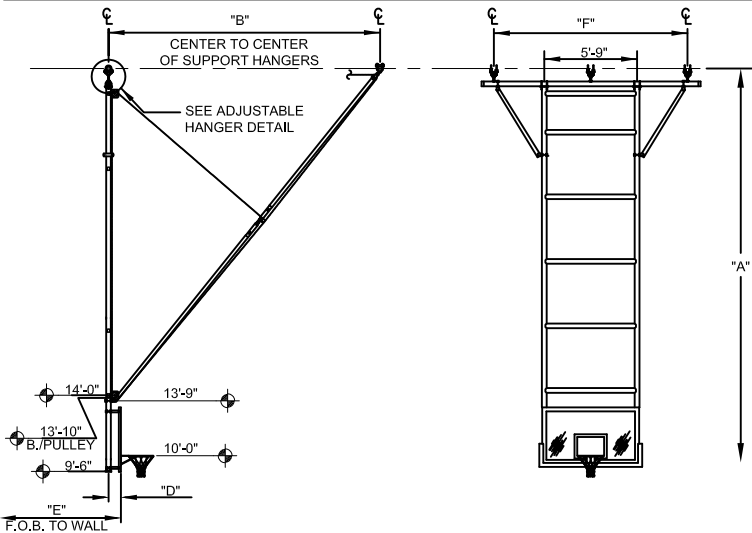


BANK EXTENSION DETAIL



OPTIONAL FEATURES

- GOAL HEIGHT ADJUSTMENT - WILL RAISE AND LOWER GOAL HEIGHT FROM 8'-0" TO 10'-0" ABOVE FINISHED FLOOR.
- SAF-STRAP - RECOMMENDED ON UNITS LOCATED OVER BLEACHER AREAS. AUTOMATIC INERTIA TYPE MECHANISM WILL LOCK BACKSTOP IN POSITION SHOULD FAILURE OCCUR. SEE PAGE B-10797 FOR DETAILS AND SPECIFICATIONS. SPECIFY No. 10797-100.
- ELECTRIC OPERATION - SEE LEFT SIDE AND PAGE B-706 FOR DETAILS AND SPECIFICATIONS. SPECIFY No. 00707-000 ELECTRIC WINCH.
- BACKBOARD SAFETY PADDING - BACKBOARD PADDING RECOMMENDED FOR FACILITIES WHERE PLAYERS' ABILITY MAY ALLOW THEM TO CONTACT BACKBOARD. (SPECIFY PADDING AS REQUIRED.)

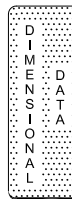


"A" ATTACHMENT HEIGHT	"B" FRONT BRACE DIMENSION (WITHIN 6")	"D" FACE OF BACKBOARD TO C OF MAST	HORIZONTAL FOLD DIMENSION	"F" HINGE TO HINGE DIMENSION
28'-0 1/8" to 29'-0"	14'-3"	SEE "D" DIMENSION CHART	18'-7"	10'-0"
29'-0 1/8" to 30'-0"	15'-3"	SEE "D" DIMENSION CHART	19'-7"	10'-0"
30'-0 1/8" to 31'-0"	16'-3"	SEE "D" DIMENSION CHART	20'-7"	10'-0"
31'-0 1/8" to 32'-0"	17'-3"	SEE "D" DIMENSION CHART	21'-7"	10'-0"
32'-0 1/8" to 33'-0"	18'-3"	SEE "D" DIMENSION CHART	22'-7"	11'-0"
33'-0 1/8" to 34'-0"	19'-3"	SEE "D" DIMENSION CHART	23'-7"	11'-0"
34'-0 1/8" to 35'-0"	20'-3"	SEE "D" DIMENSION CHART	24'-7"	12'-0"
35'-0 1/8" to 36'-0"	21'-3"	SEE "D" DIMENSION CHART	25'-7"	12'-0"
36'-0 1/8" to 37'-0"	22'-3"	SEE "D" DIMENSION CHART	26'-7"	13'-0"
37'-0 1/8" to 38'-0"	23'-3"	SEE "D" DIMENSION CHART	27'-7"	13'-0"
38'-0 1/8" to 39'-0"	24'-3"	SEE "D" DIMENSION CHART	28'-7"	14'-3"
39'-0 1/8" to 40'-0"	25'-3"	SEE "D" DIMENSION CHART	29'-7"	14'-3"

*SUBTRACT AN ADDITIONAL 2" WHEN UNIT HAS HEIGHT ADJUSTER OPTION

"D" DIMENSION CHART - FACE OF BACKBOARD TO CENTERLINE OF MAST HANGER PIVOT POINT		
BACKBOARD MODEL No.	WITHOUT HEIGHT ADJUSTER	WITH HEIGHT ADJUSTER
208	N/A	12 11/16"
204	8 1/4"	N/A
206	8 1/4"	11 1/8"

RECTANGULAR BACKBOARDS AVAILABLE WITH OFFICIAL 2" THICK BOTTOM EDGE PADDING - SPECIFY IF REQUIRED



- 91449-W00 FORWARD FOLD FRONT-BRACED BACKSTOP

porter

PROJECT NUMBER

888-277-7778 PORTER@PORTERATHLETIC.COM
© COPYRIGHT 2015 PORTER ATHLETIC - ALL RIGHTS RESERVED

PROJECT NAME

WWW.PORTERATHLETIC.COM/FACILITY

porter

BASKETBALL SPECIFICATION SHEET

B-1449-W

10/1/2015

91449-W00 - FORWARD FOLD BACKSTOP

CEILING SUSPENDED, FORWARD FOLD
28' TO 40' ATTACHMENT HEIGHT

SPECIFICATIONS

PORTER No. 1449-W "UNI-FRAME" FORWARD-FOLD BACKSTOP WITH "CLEAR-VU" FEATURE (FOR ATTACHMENT HEIGHTS OVER 28')

Vertical front drop frame assembly "Uni-Frame" shall consist of 3-1/2" O.D. drop pipes spaced on 5'-9" centers to "Hide" behind the vertical perimeter markings on the (optional) rectangular glass backboard. Frame shall be horizontally braced above the backboard by 3-1/2" O.D. spreaders spaced on approximately 4'-0" centers. Each connection of vertical and horizontal pipes shall be saddle (die) cut and welded to form a rigid, unitized frame for maximum strength and resistance to vibration. (Drop frames with flattened or pinch cut type connections will not be approved as equal.) Vertical front drop weldment shall be supported by a 3-1/2" O.D. hinge tube to provide a wide stance hinge arrangement with additional 2-3/8" O.D. diagonal side sway bracing. "Uni-Frame" shall be suspended by special adjustable hangers (3) to provide for precise plumbing of frame during installation.

Backstop to operate with double 2-3/8" O.D. front brace assemblies with a folding knee joint. Knee joint to incorporate precision investment castings with a special internal torsion spring design to lock brace assembly firmly in playing position. Knee joint assembly shall be designed with an in-line pivot design to maximize backstop stability during aggressive play. Knee joint is easily disengaged by upward force of hoist cable on 2-3/8" O.D. spreader pipe connecting the two front brace assemblies near the knee joints. Hoist cable is routed through a special three-pulley set up for ease of operation. Hoist cable shall be 1/4" diameter aircraft cable with a 7,000 lb. ultimate breaking strength. Swivel pulley shall be furnished with a 4" diameter cast (ductile iron) pulley sheave with a maintenance free, oil-impregnated bearing for proper hoist cable routing to winch. Pulley assembly and attachment to 3-1/2" O.D. support structure shall be rated at a minimum 9,000 pound load rating. Certified test results shall be furnished upon request.

Backstop shall be supported from 3-1/2" O.D. pipe anchored to roof framing members by means of heavy, formed steel support fittings. Each support fitting (supplied by the backstop manufacturer) to the roof framing, must be capable of supporting a load exceeding 10,000 pounds, with sufficient attachment points to acquire a 60:1 safety factor for support of the entire backstop superstructure system. Certified test results shall be furnished upon request. All cap screws shall be rated a minimum SAE Grade 5. Grade 2 cap screws will not be approved as equal. Superstructure pipes to be reinforced with special bridging or bracing when truss centers exceed spans of 14'-0".

Backstop shall be operated with a No. 00707-000 3/4 H.P. Electric Winch – See page No. B-706-1 for specifications.

All metal parts shall be painted one (1) coat of flat black enamel. (If special painting or colors are required, specify final painting by painting contractor.)

Backstop provided only with rectangular backboards – specify type.

Note – Due to the forward brace configuration, the No. 1449-W backstop is not recommended for competition court use.

OPTIONAL ITEMS TO SPECIFY

- Backboard Safety Padding