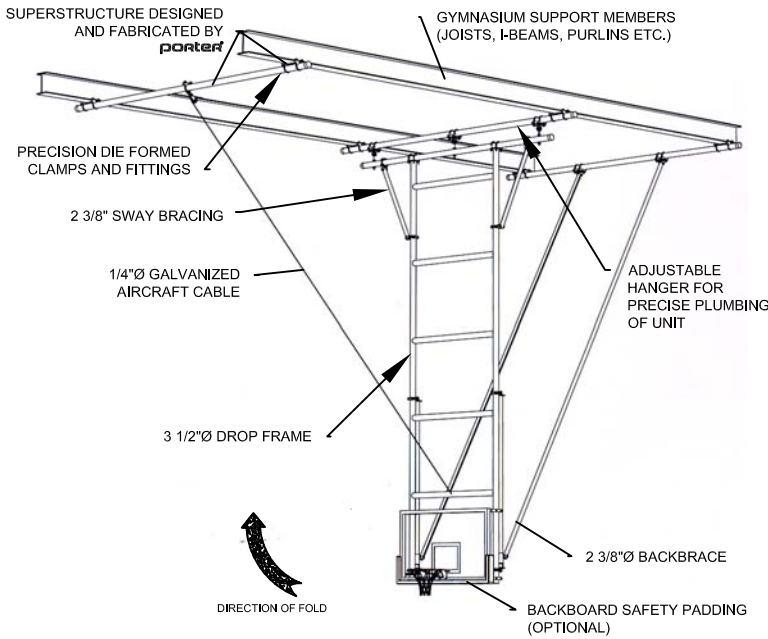


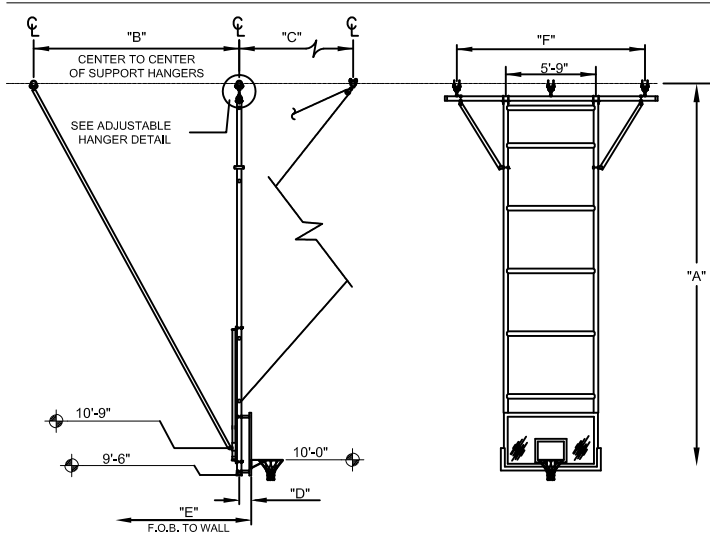
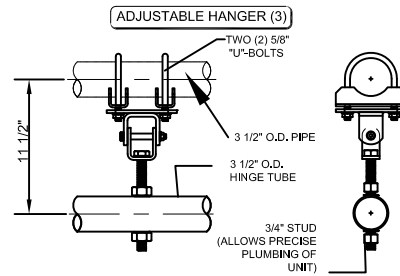
# 91417-W00 - FORWARD FOLD BACKSTOP

CEILING SUSPENDED, FORWARD FOLD, REAR BRACED UNIT  
28' TO 40' ATTACHMENT HEIGHT



**GENERAL NOTES**  
(SEE LEFT SIDE FOR COMPLETE PRODUCT SPECIFICATION)

- SUPERSTRUCTURE SUPPLIED FOR EXISTING BUILDING CONDITIONS. A. BACKSTOP SHALL BE SUPPORTED FROM 3 1/2" O.D. PIPE AND SECURE TO BEAMS WITH PRECISION DIE FORMED CLAMPS AND FITTINGS. B. SPECIAL ATTACHMENT MEMBERS TO COMPLY WITH BUILDING DESIGN LOCATED BY PORTER, DESIGNED BY ARCHITECT AND INSTALLED BY CONTRACTOR TO ELIMINATE EXPOSED PIPE BELOW CEILING.
- "CLEAR-VU" ASSEMBLY WHICH CONSISTS OF 3 1/2" O.D. DROP PIPES AND 3 1/2" SPREADER PIPES ARE WELDED INTO ONE RIGID UNIT. 3 1/2" O.D. HINGE TUBE AND 2 3/8" O.D. SWAY BRACES ARE SHIPPED DETACHED OF MAST TO ALLOW FRAME TO FIT THRU GYMNASIUM DOOR OPENINGS
- 3 1/2" O.D. DROP FRAME PIPES SPACED TO HIDE BEHIND PERIMETER MARKINGS ON BANK.
- MINIMUM DISTANCE FOR FACE OF BANK TO WALL = "B"+1'-6"
- ELECTRIC OPERATION STANDARD, MANUAL OPERATION IS NOT AVAILABLE.



**OPTIONAL FEATURES**

- GOAL HEIGHT ADJUSTMENT - WILL RAISE AND LOWER GOAL HEIGHT FROM 8'-0" TO 10'-0" ABOVE FINISHED FLOOR.
- SAF-STRAP - RECOMMENDED ON UNITS LOCATED OVER BLEACHER AREAS. AUTOMATIC INERTIA TYPE MECHANISM WILL LOCK BACKSTOP IN POSITION SHOULD FAILURE OCCUR. SEE PAGE B-10797 FOR DETAILS AND SPECIFICATIONS. SPECIFY No. 10797-100.
- ELECTRIC OPERATION - SEE LEFT SIDE AND PAGE B-706 FOR DETAILS AND SPECIFICATIONS. SPECIFY No. 00707-000 ELECTRIC WINCH.
- BACKBOARD SAFETY PADDING - BACKBOARD PADDING RECOMMENDED FOR FACILITIES WHERE PLAYERS' ABILITY MAY ALLOW THEM TO CONTACT BACKBOARD. (SPECIFY PADDING AS REQUIRED.)
- RETRACTOR REEL - RETRACTS HOIST CABLE AND SAF-STRAP FROM PLAY AREA. SPECIFY No. 10798-000.

"A" ATTACHMENT HEIGHT	*"B" BACK BRACE DIMENSION (WITHIN 6"s)	"C" PULLEY DIMENSION	"D" FACE OF BACKBOARD TO C OF MAST	HORIZONTAL FOLD DIMENSION	"E" FACE OF BACKBOARD TO C OF BACK BRACE	"F" HINGE TO HINGE DIMENSION
28'-0 1/8" to 29'-0"	10'-7"	14'-1"	SEE "D" DIMENSION CHART	18'-7"	11'-2"	10'-0"
29'-0 1/8" to 30'-0"	11'-3"	15'-1"		19'-7"	11'-10"	10'-0"
30'-0 1/8" to 31'-0"	11'-9"	16'-1"		20'-7"	12'-8"	10'-0"
31'-0 1/8" to 32'-0"	12'-4"	17'-1"		21'-7"	13'-6"	10'-0"
32'-0 1/8" to 33'-0"	13'-0"	18'-1"		22'-7"	14'-4"	11'-0"
33'-0 1/8" to 34'-0"	13'-6"	19'-1"		23'-7"	15'-2"	11'-0"
34'-0 1/8" to 35'-0"	14'-1"	20'-1"		24'-7"	16'-0"	12'-0"
35'-0 1/8" to 36'-0"	14'-8"	21'-1"		25'-7"	16'-10"	12'-0"
36'-0 1/8" to 37'-0"	15'-3"	22'-1"		26'-7"	17'-8"	13'-0"
37'-0 1/8" to 38'-0"	15'-10"	23'-1"		27'-7"	18'-6"	13'-0"
38'-0 1/8" to 39'-0"	16'-5"	24'-1"		28'-7"	19'-4"	14'-3"
39'-0 1/8" to 40'-0"	17'-0"	25'-1"		29'-7"	20'-2"	14'-3"

\*SUBTRACT AN ADDITIONAL 2" WHEN UNIT HAS HEIGHT ADJUSTER OPTION



**"D" DIMENSION CHART - FACE OF BACKBOARD TO CENTERLINE OF MAST HANGER PIVOT POINT**

BACKBOARD MODEL No.	WITHOUT HEIGHT ADJUSTER	WITH HEIGHT ADJUSTER
208	N/A	12 11/16"
204	8 1/4"	N/A
206	8 1/4"	11 1/8"

RECTANGULAR BACKBOARDS AVAILABLE WITH OFFICIAL 2" THICK BOTTOM EDGE PADDING - SPECIFY IF REQUIRED

\_\_\_\_\_ - 91417-W00 FORWARD FOLD, REAR-BRACED BACKSTOP



PROJECT NUMBER \_\_\_\_\_

PROJECT NAME \_\_\_\_\_

# 91417-W00 - FORWARD FOLD BACKSTOP

CEILING SUSPENDED, FORWARD FOLD, REAR BRACED UNIT  
28' TO 40' ATTACHMENT HEIGHT

## SPECIFICATIONS

### PORTER No. 1417-W "UNI-FRAME" CEILING-SUSPENDED FORWARD-FOLD BACKSTOP WITH "CLEAR-VU" FEATURE (FOR ATTACHMENT HEIGHTS OVER 28')

Vertical front drop frame assembly "Uni-Frame" shall consist of 3-1/2" O.D. drop pipes spaced at 5'-9" centers to "Hide" behind the vertical perimeter markings on the (optional) rectangular glass backboard. Frame shall be horizontally braced above the backboard by 3-1/2" O.D. spreaders spaced on approximately 4'-0" centers. Both ends of horizontal spreaders shall be saddle (die) cut to fit the outside diameter of the 3-1/2" O.D. drop pipes. Each connection of vertical and horizontal pipes shall be welded to form a rigid unitized frame for maximum strength and resistance to vibration. (Drop frames with flattened or pinch cut type connections will not be approved as equal.) Vertical front drop weldment shall be supported by a 3-1/2" O.D. hinge tube to provide a wide stance hinge arrangement with additional 2-3/8" O.D. diagonal side sway bracing. Special formed steel backboard attachment fittings shall provide the official N.C.A.A. and NFHS regulation of 6" (15.24cm) from the front of the "Uni-Frame" to the face of the backboard. "Uni-Frame" shall be suspended by special adjustable hangers (3) to provide for precise plumbing of frame during installation.

Dual back brace assemblies shall terminate behind backboard location in a special slide collar bracket which shall operate over a 2-3/8" O.D. heavy-wall plated slide tube as backstop is hoisted to the ceiling. Adjustable collar seat shall be provided for accurate plumbing of backstop. Hoist cable shall be 1/4" diameter aircraft cable with a 7,000 lb. ultimate breaking strength. Swivel pulley shall be furnished with a 4" diameter cast (ductile iron) pulley sheave with a maintenance free, oil-impregnated bearing for proper hoist cable routing to winch. Pulley assembly and attachment to 3-1/2" O.D. support structure shall be rated at a minimum 9,000 pound load rating. Certified test results shall be furnished upon request.

Backstop shall be supported from 3-1/2" O.D. pipe anchored to roof framing members by means of heavy, formed steel support fittings. Each support fitting (supplied by the backstop manufacturer) to the roof framing, must be capable of supporting a load exceeding 10,000 pounds, with sufficient attachment points to acquire a 60:1 safety factor for support of the entire backstop superstructure system. Certified test results shall be furnished upon request. All cap screws shall be rated a minimum SAE Grade 5. Grade 2 cap screws will not be approved as equal. Superstructure pipes to be reinforced with special bridging or bracing when truss centers exceed spans of 14'-0".

Backstop shall be operated by a No. 00707-000 3/4 H.P. Electric Winch – see page No. B-706-1 for specifications.

All metal parts shall be painted one (1) coat of flat black enamel. (If special painting or colors are required, specify final painting by painting contractor.)

Backstop provided only with rectangular backboards – specify type.

#### OPTIONAL ITEMS TO SPECIFY

- Backboard Safety Padding